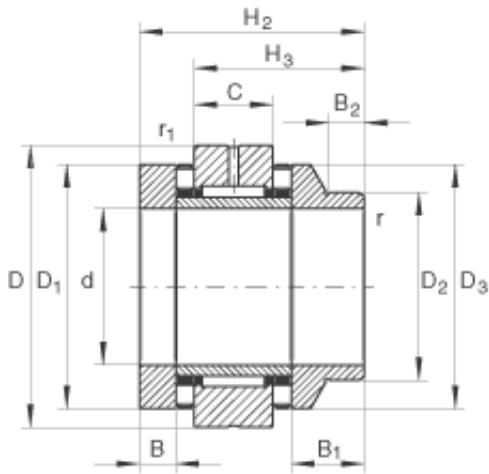




Bearing equipment manufacturing Co., Ltd



20 mm x 62 mm x 12,5 mm INA ZARN2062-L-TV complex bearings

Bearing No. ZARN2062-L-TV

ZARN2062-L-TV Bearing 2D drawings and 3D CAD models

Size	20x62x75 mm
Bore Diameter	20 mm
Outer Diameter	62 mm
Width	75 mm
d	20 mm
D	62 mm
H ₂	75 mm
B	12,5 mm
B ₁	27,5 mm
B ₂	11 mm
C	20 mm
D ₁	52 mm
D ₂	40 mm
D ₃	50 mm
D _{a max}	53 mm
d _{a min}	38 mm
H ₃	55 mm
r _{1 min}	0,6 mm
r _{min}	0,3 mm
m	0,99 kg / Weight
C _a	64000 N / Dynamic load rating (axial)
C _{0a}	141000 N / Static load rating (axial)



Bearing equipment manufacturing Co., Ltd

C_r	22600 N / Dynamic load rating (radial)
C_{0r}	36000 N / Static load rating (radial)
$n_{G\ OI}$	6000 1/min / Limiting speed for oil lubrication (valid only with adequate oil cooling)
$n_{G\ Fett}$	1500 1/min / Limiting speed for grease lubrication
M_{RL}	1,3 Nm / Bearing frictional torque
c_{aL}	2300 N/ μ m / Axial rigidity
c_{kL}	400 Nm/mrad / Tilting rigidity
M_m	2,27 kg x cm ² / Mass moment of inertia for rotating inner ring
	1 μ m / Axial runout (The axial runout data for screw drive bearing arrangements are based on the rotating inner ring)
	ZMA20/52 / Designation of recommended INA locknut
Category	Ball Bearings
Inventory	0.0
Manufacturer Name	SCHAEFFLER GROUP
Minimum Buy Quantity	N/A
Weight / Kilogram	1.186
EAN	4012802439946
Product Group	B00234