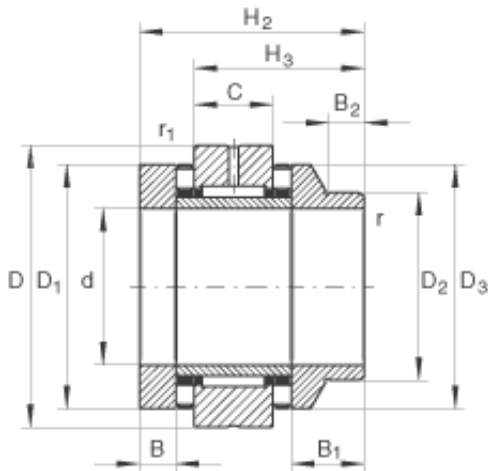




Bearing equipment manufacturing Co., Ltd



65 mm x 125 mm x 17,5 mm INA ZARN65125-L-TV complex bearings

Bearing No. ZARN65125-L-TV

ZARN65125-L-TV Bearing 2D drawings and 3D CAD models

Size	65x125x103 mm
Bore Diameter	65 mm
Outer Diameter	125 mm
Width	103 mm
d	65 mm
D	125 mm
H ₂	103 mm
B	17,5 mm
B ₁	38,5 mm
B ₂	16 mm
C	25 mm
D ₁	110 mm
D ₂	90 mm
D ₃	108 mm
D _{a max}	111 mm
d _{a min}	88 mm
H ₃	74,5 mm
r _{1 min}	0,6 mm
r _{min}	0,3 mm
m	4,6 kg / Weight
C _a	172000 N / Dynamic load rating (axial)
C _{0a}	500000 N / Static load rating (axial)



Bearing equipment manufacturing Co., Ltd

C_r	54000 N / Dynamic load rating (radial)
C_{0r}	104000 N / Static load rating (radial)
$n_{G\ OI}$	2600 1/min / Limiting speed for oil lubrication (valid only with adequate oil cooling)
$n_{G\ Fett}$	900 1/min / Limiting speed for grease lubrication
M_{RL}	4 Nm / Bearing frictional torque
C_{aL}	4800 N/ μ m / Axial rigidity
C_{kL}	4000 Nm/mrad / Tilting rigidity
M_m	60,1 kg x cm ² / Mass moment of inertia for rotating inner ring
	1 μ m / Axial runout (The axial runout data for screw drive bearing arrangements are based on the rotating inner ring)
	ZMA65/105 / Designation of recommended INA locknut