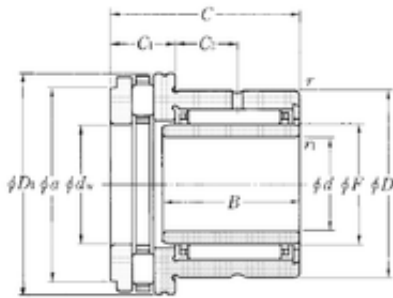
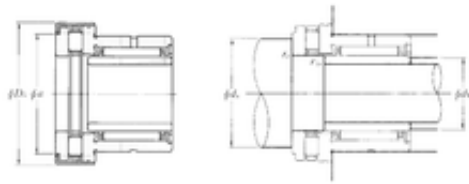




Bearing equipment manufacturing Co., Ltd



30 mm x 47 mm x 20 mm NTN
NKXR35T2Z+IR30 × 35 × 20 complex bearings

Bearing No. NKXR35T2Z+IR30 × 35 × 20

NKXR35T2Z+IR30 × 35 × 20 Bearing 2D drawings and 3D CAD models

Bore Diameter	30 mm
Outer Diameter	53 mm
d	30 mm
d1	35 mm
F	35 mm
D	47 mm
D1	52 mm
D2	53 mm
B	20 mm
C	30 mm
ra1 max.	0,3 mm
a	47,7 mm
r min.	0,6 mm
r1 min.	0,3 mm
C1	12 mm
da min.	49 mm
db min	32 mm
ra max.	0,6 mm
C2	9 mm
Weight	0,235 Kg
Dynamic load rating radial (C)	20 kN
Dynamic load rating axial (C)	31 kN
Static load rating radial (C0)	36 kN
Static load rating axial (C0)	87 kN



Bearing equipment manufacturing Co., Ltd

(Grease) Lubrication Speed

1400 r/min