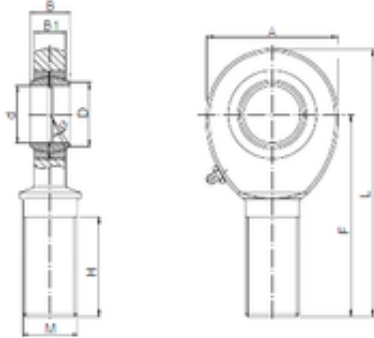




Bearing equipment manufacturing Co., Ltd

30 mm x 34,8 mm x 37 mm ISO SAL 30 plain bearings



Bearing No. SAL 30

Bore Diameter	30 mm
d	30 mm
B	37 mm
A	70 mm
B1	25 mm
D	34,8 mm
F	110 mm
H	71 mm
L	145 mm
Bolt (G)	M30x2

SAL 30 Bearing 2D drawings and 3D CAD models