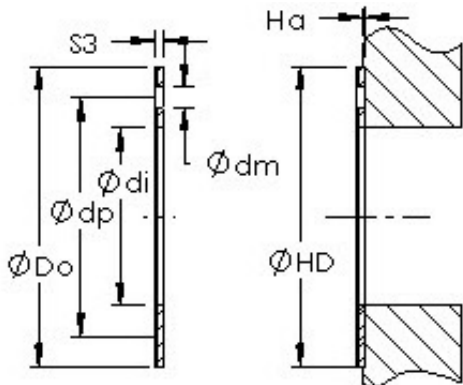




## Bearing equipment manufacturing Co., Ltd



### AST AST20 WC261B plain bearings

Bearing No. AST20 WC261B

Bore Diameter	42,8752 mm
Outer Diameter	69,85 mm
Bearing Type	thrust washer
Shaft Dia., Nominal (d)	1.6880
Bearing Outside Diameter, Nominal(Do)	2.750
Washer Inside Diameter, Nominal (di)	2
Washer Inside Diameter Tolerance (di tol.) - +.010 / -0	+0.010 / 0
Washer Outside Diameter, Nominal (Do)	3
Washer Outside Diameter Tolerance (Do tol.) - +0 / -.010	+0 / .010
Washer Thickness, Nominal (S3)	0
Washer Thickness Tolerance (S3 tol.) - +.035 / -0	+0.035 / 0
Mounting Hole Dia. (dm)	0.192
Mounting Hole Pitch Dia. (dp)	2.255
Housing Counterbore Depth (Ha)	0.04
Housing Counterbore Depth Tolerance (Ha tol.) - +.010 / -.010	+0.010 / .010
Housing Counterbore Diameter, Nominal (HD)	2.750

AST20 WC261B Bearing 2D drawings and 3D CAD models



## Bearing equipment manufacturing Co., Ltd

Housing Counterbore Diameter Tolerance (HD tol.) - $+0.010 / -0$	$+0.010 / 0$
Material	Carbon steel shell with POM plastic liner