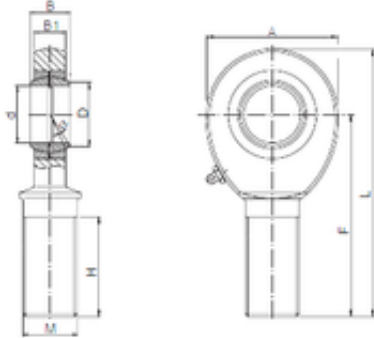




## Bearing equipment manufacturing Co., Ltd

22 mm x 25,8 mm x 28 mm ISO SA 22 plain bearings



Bearing No. SA 22

Bore Diameter	22 mm
d	22 mm
B	28 mm
A	54 mm
B1	20 mm
D	25,8 mm
F	84 mm
H	51 mm
L	111 mm
Bolt (G)	M22x1,5

SA 22 Bearing 2D drawings and 3D CAD models