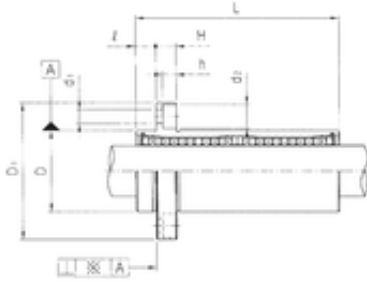
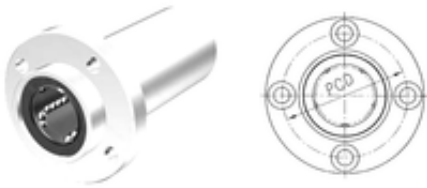




Bearing equipment manufacturing Co., Ltd



LMEFP50LUU Bearing 2D drawings and 3D CAD models

Samick LMEFP50LUU linear bearings

Bearing No. LMEFP50LUU

Bore Diameter	50 mm
Outer Diameter	75 mm
d	50 mm
D	75 mm
d1	14 mm
d2	8,6 mm
h	13 mm
D1	112 mm
H	94 mm
L	192 mm
PCD	9 mm
	13 Tolerance h14
Tolerance perpendicularity (C)	20
Weight	3,5 Kg
Basic dynamic load rating (C)	6,08 kN