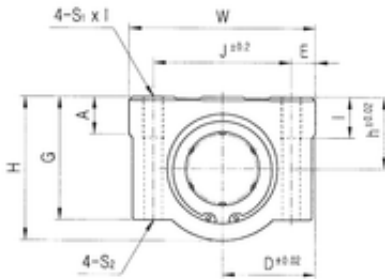




Bearing equipment manufacturing Co., Ltd



SC10UU Bearing 2D drawings and 3D CAD models

Samick SC10UU linear bearings

Bearing No. SC10UU

Bore Diameter	10 mm
d	10 mm
h	13 mm
A	8 mm
D	20 mm
E	6 mm
G	21 mm
H	26 mm
J	28 mm
K	21 mm
L	35 mm
S1x	M5
S2	4,3 mm
W	40 mm
Weight	0,09 Kg
Basic dynamic load rating (C)	0,37 kN