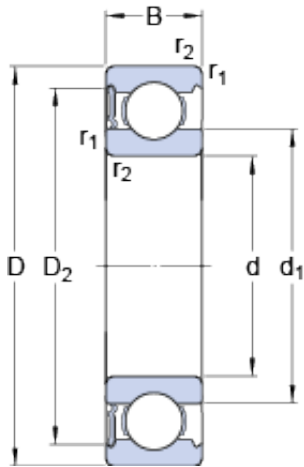




Bearing equipment manufacturing Co., Ltd



95 mm x 200 mm x 45 mm SKF 6319-RS1 deep groove ball bearings

Bearing No. 6319-RS1

6319-RS1 Bearing 2D drawings and 3D CAD models

Size	200x95x45 mm
Bore Diameter	200 mm
Outer Diameter	95 mm
Width	45 mm
d	95 mm
D	200 mm
B	45 mm
d ₁	127.7 mm
D ₂	171.9 mm
r _{1,2} - min.	3 mm
d _a - min.	109 mm
d _a - max.	127 mm
D _a - max.	186 mm
r _a - max.	2.5 mm
Basic dynamic load rating - C	159 kN
Basic static load rating - C ₀	118 kN
Fatigue load limit - P _u	4.2 kN
Limiting speed	2200 r/min
Calculation factor - k _r	0.03
Calculation factor - f ₀	13
d ₁	127.7 mm
D ₂	171.9 mm
r _{1,2} min.	3 mm
d _a min.	109 mm



Bearing equipment manufacturing Co., Ltd

d_a max.	127 mm
D_a max.	186 mm
r_a max.	2.5 mm
Basic dynamic load rating C	159 kN
Basic static load rating C_0	118 kN
Fatigue load limit P_u	4.15 kN
Calculation factor k_r	0.03
Calculation factor f_0	13.3
Mass bearing	5.77 kg